

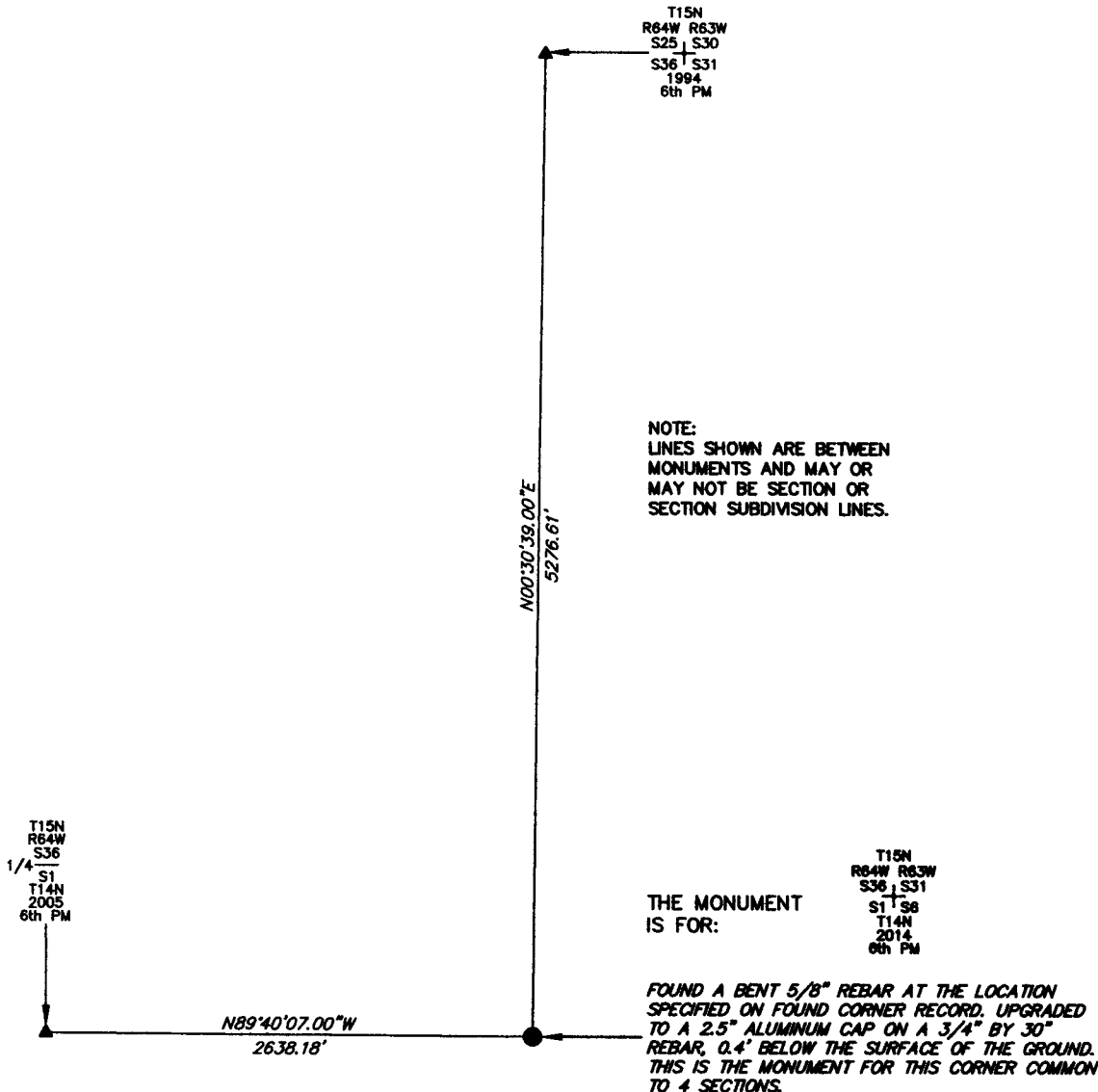
# State of Wyoming Corner Record

CORNER PERPETUATION AND FILING ACT,

Regulations of the Board of Registration for Professional Engineers and Land Surveyors.)

Reverse side of this form may be used if more space is needed.

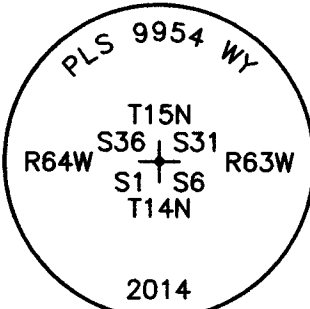
Record of original survey and citation of source of historic information (if corner is lost or obliterated). Description of corner monumentation evidence found and/or monument and accessories established to perpetuate the location of this corner. Sketch of relative location of monument, accessories, and reference points with course and distance to adjacent corner(s) (if determined in this survey). Method and rationale for reestablishment of lost or obliterated corner.



NOTE:  
LINES SHOWN ARE BETWEEN  
MONUMENTS AND MAY OR  
MAY NOT BE SECTION OR  
SECTION SUBDIVISION LINES.

THE MONUMENT  
IS FOR:

FOUND A BENT 5/8" REBAR AT THE LOCATION  
SPECIFIED ON FOUND CORNER RECORD, UPGRADED  
TO A 2.5" ALUMINUM CAP ON A 3/4" BY 30"  
REBAR, 0.4' BELOW THE SURFACE OF THE GROUND.  
THIS IS THE MONUMENT FOR THIS CORNER COMMON  
TO 4 SECTIONS.



CORNER MONUMENT SYMBOLS

- RECORD IS FOR THIS CORNER MONUMENT.
- ▲ A RELATED CORNER OR WC MONUMENT.

SCALE 1"=1000'  
(EXCEPT IN  
TRIVIAL CASES)  
BEARINGS ARE RELATED  
TO WGS 84 WITH  
GPS OBSERVATIONS  
DRAWN BY: SM  
P.C. B. LOWREY  
COUNTY: LARAMIE

THE MONUMENT IS MARKED

Date of Field Work: 10/08/2014 Office Reference: \_\_\_\_\_

CROSS INDEX DIAGRAM

1	2	3	4	5	6	7	8	9	10	11	12	13	14	15	16	17	18	19	20	21	22	23	24	25	
A																									
B																									
C	6		5		4		3		2		1														
D																									
E																									
F																									
G			7		8		9		10		11		12												
H																									
J																									
K																									
L	18		17		16		15		14		13														
M																									
N																									
O																									
P	19		20		21		22		23		24														
Q																									
R																									
S																									
T	30		29		28		27		26		25														
U																									
V																									
W																									
X	31		32		33		34		35		36														
Y																									
Z																									

Firm/Agency, Address

UELS, LLC

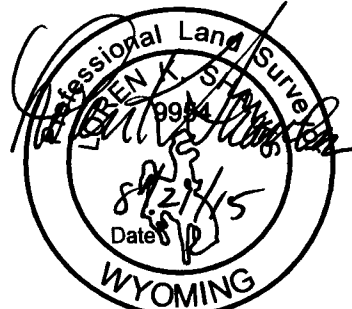
85 South 200 East

Vernal, Utah 84078

Telephone Number: 435-789-1017

This corner record was prepared  
by me or under my direction  
and supervision.

SEAL & SIGNATURE



RECP #: 670096  
RECORDED 9/22/2015 AT 10:41 AM BK# 2465 PG# 104  
Debra K. Lathrop, CLERK OF LARAMIE COUNTY, WY PAGE 1 OF 1